

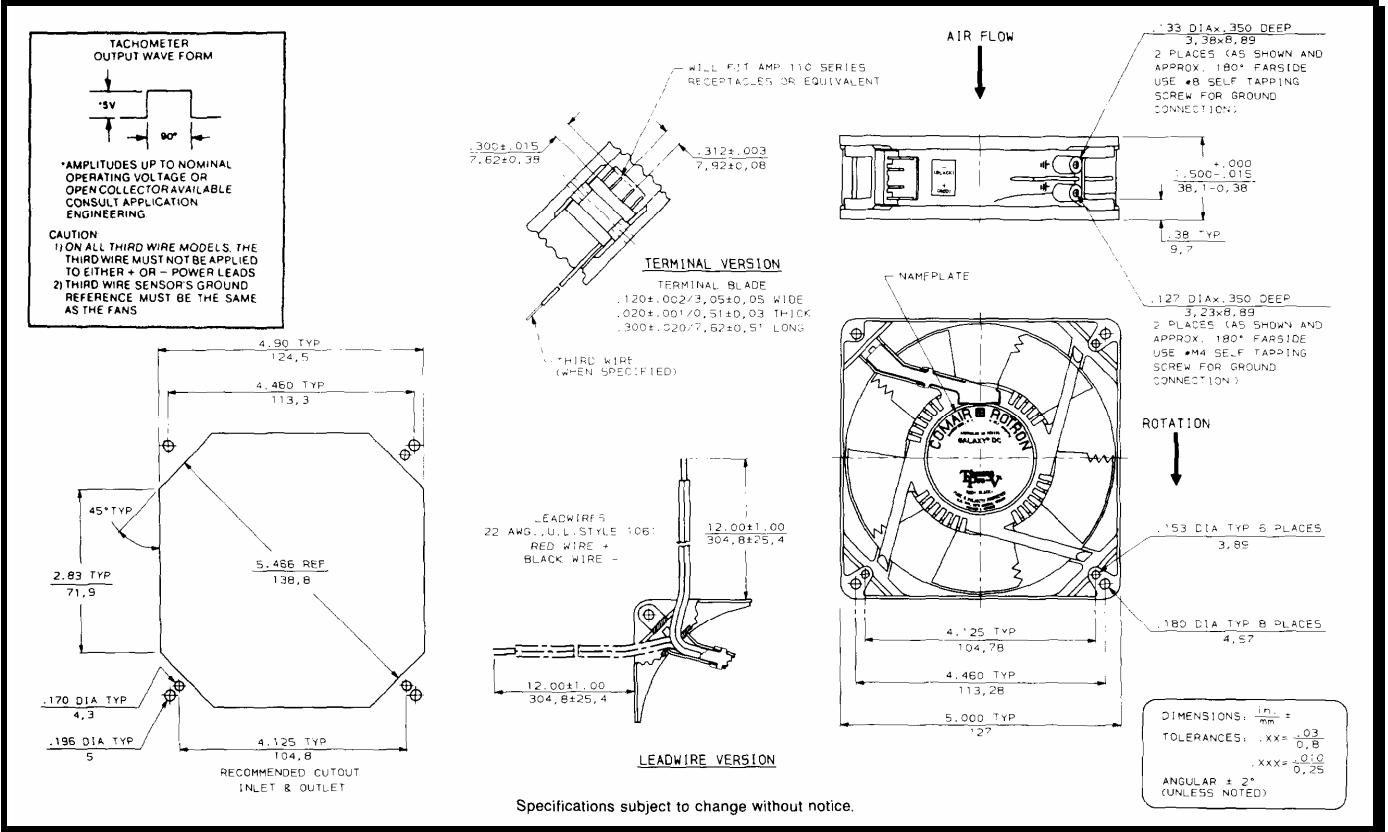
# SPECIFICATIONS



**Model Number:** GL12K6PNDNX  
**Part Number:** 19041261A

Jan 5, 2009

## Mechanical Drawing:



### Motor: High Speed Galaxy

Nominal Voltage	= 12 VDC
Operating Voltage Range	= 6 - 14 vdc
Nominal Running Current	= 1.650 amps
Max. Locked Rotor Current	= 4.000 amps
Running Power	= 19.8 watts
Max Program Speed	= 3550 (RPM)
Min Program Speed	= 2950 (RPM)
Bearings	= Ball
Airflow (at full-speed)	= 160 CFM
Acoustic	= 55.5 dBA

### Construction:

Venturi: Die Cast Zinc, Black  
 Propeller: Polycarbonate, Black, UL94V-0

### Life Expectancy:

This fan is designed for continuous duty life of 80,000 hours at 40°C

### Agencies:

UL, CUL, CE

### Additional Features:

- Fault Tolerant System
- Brushless DC Motors
- Electronic Locked Rotor Protection
- Polarity Protected
- 14 volt operation has max. operating temp of 50°C

### Alarm Features:

- Output: Open Collector  
 $I_c$  20mA Max.
- Logic: Low on Pass/High on Fail
- Delay: Yes
- Latching: No
- Isolated: No

### Termination:

- Harness Assembly, 190±10mm, 22 AWG, UL1061 leadwires ,Connector: Molex 39-01-4051
- Terminals: Molex 39-00-0181
  - Pin 1 – Return (Black)
  - Pin 2 – Power (Red)
  - Pin 3 – Alarm (Blue/White)
  - Pin 4 – Program Lead (Yellow)
  - Pin 5 – Not used