

**LINEAR OUTPUT HALL
EFFECT TRANSDUCER**

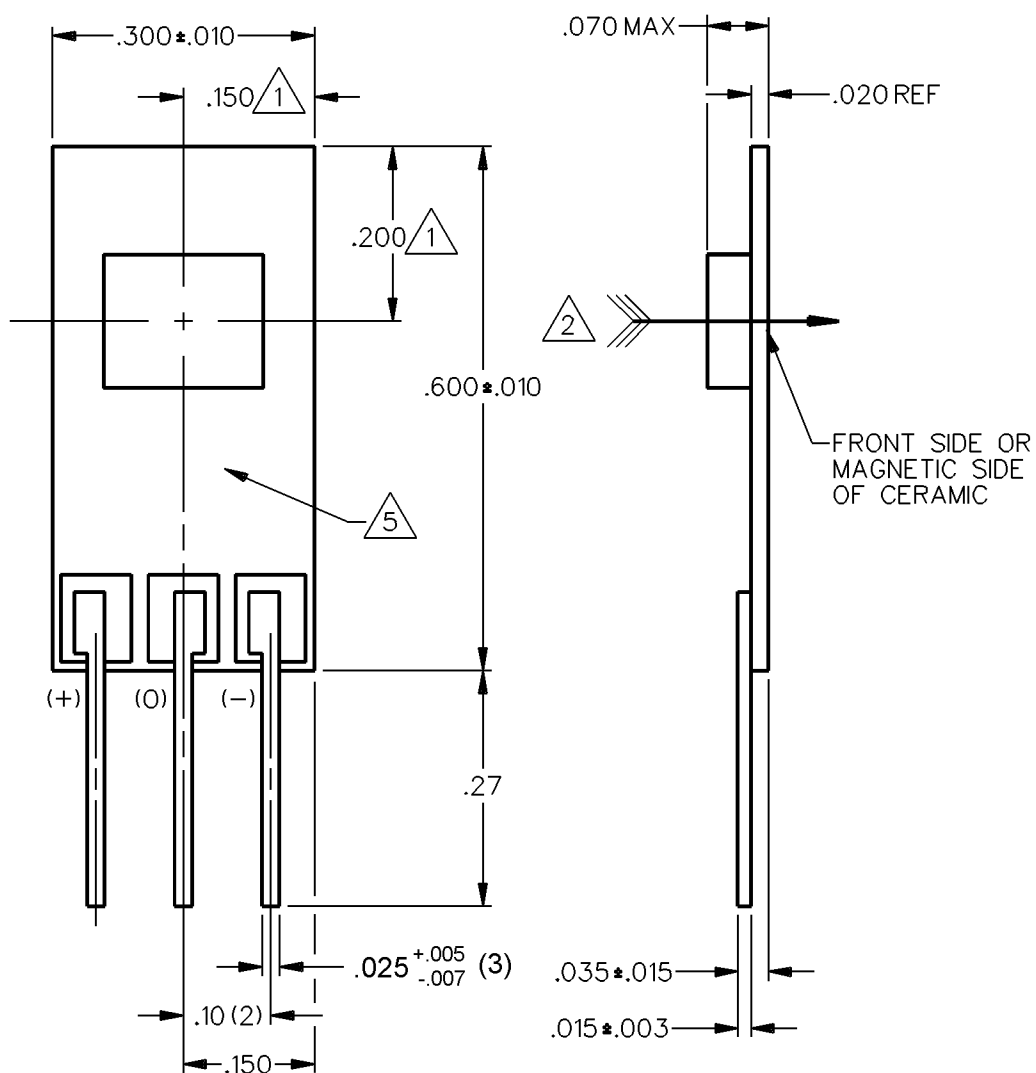
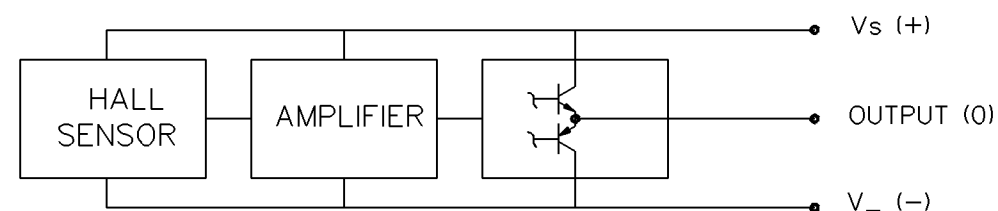
CATALOG LISTING
SS94A1B

THIS DRAWING COVERS A PROPRIETARY ITEM AND IS THE PROPERTY OF MICRO SWITCH. A DIVISION OF HONEYWELL. THIS DRAWING IS NOT TO BE COPIED OR USED WITHOUT THE APPROVAL OF MICRO SWITCH

OPERATING CHARACTERISTICS AT 5 VDC

PARAMETER	MIN	TYP	MAX	UNITS	CONDITIONS/REMARKS
SUPPLY VOLTAGE	4.50	5.00	8.00	VOLTS	-20°C TO +125°C
SUPPLY CURRENT		16	17.5	mA	MAX AT 8.0V AT -20°C
OUTPUT CURRENT			1	mA	SINKING OR SOURCING
OUTPUT SPAN		.375Vs		VOLTS	-500G TO +500G AT 25°C
SENSITIVITY	1.775	1.875	1.975	mV/g	AT 5.00 Vs & 25°C
LINEARITY	-1.5	-.8	0	% OF SPAN	DEV FROM STR LINE THRU -500 AND +500
Vout AT 0 GAUSS	2.450	2.500	2.550	VOLTS	25°C
TEMP ERROR-NULL	-.025		+.025	%/°C	-20°C TO +125°C
TEMP ERROR-GAIN	-.025		+.025	%/°C	-20°C TO +125°C

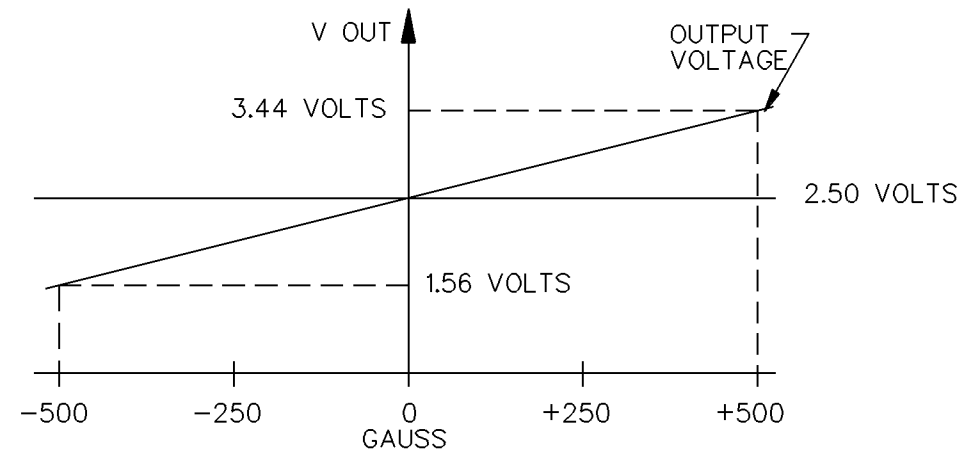
BLOCK DIAGRAM CURRENT SINKING OR SOURCING OUTPUT



NOTES

- ① CENTERLINE OF HALL CELL (IC) ONLY. THE LOCATION OF THE CERAMIC COVER IS NOT SPECIFIED
- ② THE + MAGNETIC FLUX IS IN THIS DIRECTION (THIS ASSUMES THE CONVENTION THAT THE DIRECTION OF THE EXTERNAL FLUX OF A MAGNET IS FROM THE NORTH TO THE SOUTH POLE OF THE MAGNET)
- 3 - THE DEVICE CANNOT BE DAMAGED BY MAGNETIC OVERDRIVE
- 4 - OUTPUT TYPE - RATIOMETRIC
- ⑤ ARTWORK TYPICAL

NOMINAL TRANSFER CHARACTERISTICS AT 5.0 VDC



THIRD ANGLE PROJECTION	
SCALE 5 : 1	
DO NOT SCALE PRINT	
UNLESS OTHERWISE SPECIFIED TOLERANCES ARE	
ONE PLACE	(.0) ±.030
TWO PLACE	(.00) ±.015
THREE PLACE	(.000) ±.005
ANGLES	±
WEIGHT	



CATALOG LISTING SS94A1B PAGE 1 OF 1
 ISSUE 6
 REVISIONS:
 A C068725 J A S 25 OCT 90
 B C072441 J A S 18 MAY 92
 C C095704 D L M 21 MAR 00
 D 0038694 SSK 14 APR 08
 E 0039911 SS 19 MAY 08
 DRAWN T.M.M. 26 SEP 88
 CHECK K.A.G. 12 OCT 88
 CHECK BLR
 CHECK 19 MAY 08
 RELEASE NO. PR-16792
 REPLACES X89105-SS
 RASTER